

RUSSELL

Technologies-India

Leeb hardness tester THL210



FEATURES

LCD display of 128×64 matrix with back-light, showing all functions and parameters.

Converts to all common hardness scales (HV,HB,HRC,HRB,HRA,HS).

English displaying and easy and convenient menu operation.

Powerful PC Software available and USB 1.0 interface and USB with Protective Membrane.

7 types of Impact Device optional, which don't need to be recalibrated when changing them.

Memory of 600 groups data (impact times:32~1) .

Lower limit setting and sound alarm.Material of “cast steel” is added; HB values can be read out directly when D/DC impact device is used to measure “cast steel” work piece.

Printer be separated from main unit and copies of testing results can be printed as required.

Normal battery AAA and big power store while USB connected and charging controlling circuit.

SPECIFICATIONS

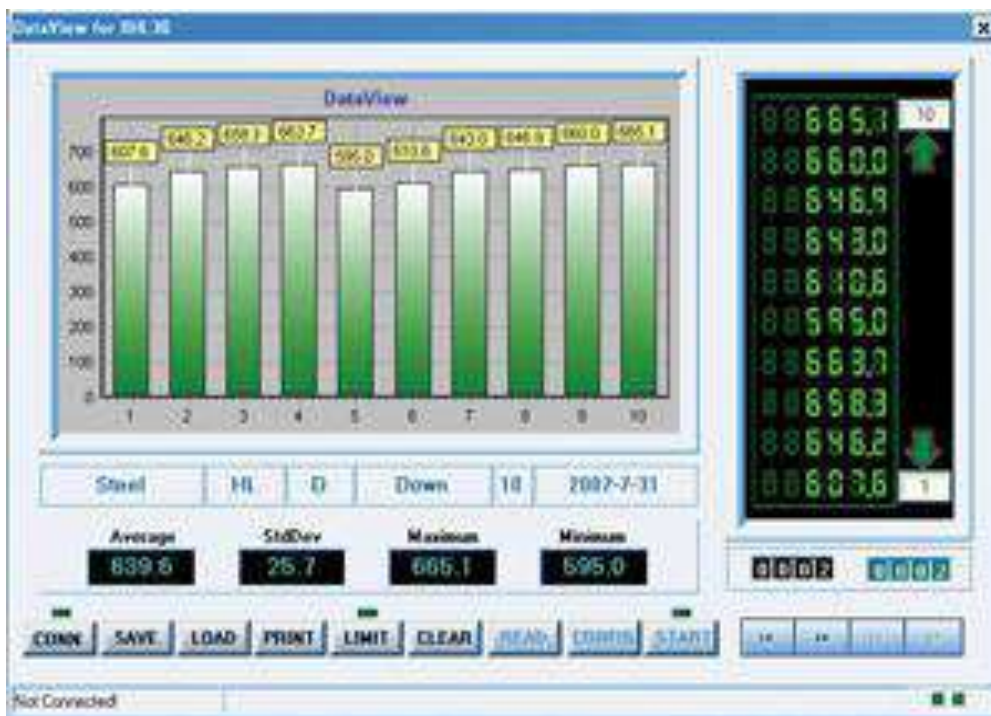
Hardness scale	HL, HB, HRB, HRC, HRA, HV, HS
Memory	48~600 groups (impact times: 32~1)
Measuring range	HLD (170~960) See below table 1 and table 2
Accuracy	$\pm 6\text{HLD}$ (760 $\pm 30\text{HLD}$) error of displayed value
Standard Impact Device	D
Optional Impact Devices	DC/D+15/G/C/DL
Min. Radius of Workpiece	Rmin = 50mm (with special support ring) Rmin= 10mm)
Min. Workpiece weight	2~5kg on stable support
	0.05~2kg with compact coupling
Min. Workpiece thickness	5mm (Impact Devices D/DC/DL/D+15)
	1mm (Impact Device C)
	10mm (Impact Device G)
Min. thickness of hardened surface	0.8mm
Power	Normal AA Battery
Continuous Working time	approx. 100 h (no back light off)
Operating temperature	0~40°C
Relative humidity	$\leq 90\%$
Overall dimensions	125*67*31mm (main unit)
Weight	0.3kg (main unit)

STANDARD CONFIGURATION

Seq	Name	Qty	Remark
1	THL210 Main Unit	1	Standard configuration
2	Impact Device Type D	1	Standard configuration
3	Leeb Standard Test Block	1	Standard configuration
4	Cleaning Brush	1	Standard configuration
5	Supporting Ring	1	Standard configuration
6	Communication Cable	1	Standard configuration
7	Manual	1	Standard configuration
8	Carrying Case	1	Standard configuration
9	THL210 DataPro Software(USB)	1	Standard configuration
10	Mini-printer	1	Optional configuration



DATA PRO FOR HARDNESS TESTER THL210



RUSSELL TECHNOLOGIES INDIA PVT. LTD.

C-2/290, Sector-F, Jankipuram, Lucknow-226021, U.P.

Off: +91 0522 4027541, Mob: +91 7905987208

www.russelltech-india.in, info@russelltech-india.com